



The Painted Turtle Pillow Instructions

2011 American Sewing Guild Community Service Project

- This camp is open to children with chronic illness, we need to be aware that these children may have allergies and being sensitive to various fabrics. This is why 100% cotton fabric is recommended in making these pillows. Many will want to use fleece because how soft and cuddly it is. It is not 100% cotton!
- Each camper will be going home with a stuffed turtle pillow as a memento of their time at The Painted Turtle Camp.
- If your chapter has fabric that has been donated and want to use it but not sure if it is cotton, do a Burn Test on it.
- Be creative when putting fabric together if you are using 2 colors or 3 colors. Mix and match.
- Margo Martin has a challenge out to you: For those who are mothers, grandmothers, sisters and aunts with a special boys in our lives, create a boy turtle pillow and send it off in honor of the boys you love. Margo is encouraging you to send in digital photos of some of the boy turtle pillows. She will post them on our website to encourage others to think beyond PINK!

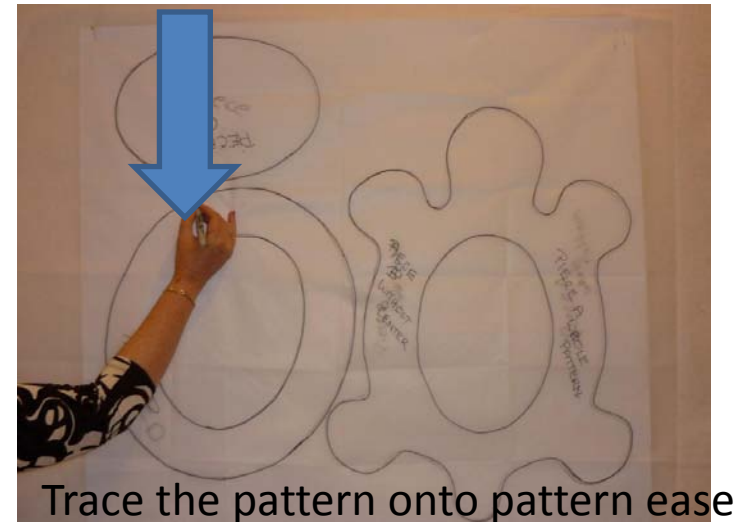
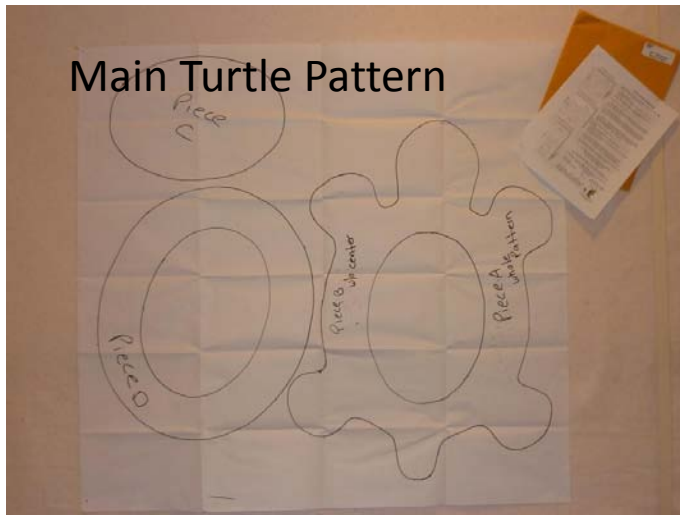
Fabric & Notion Supplies:

- **Fabric Requirements:** *100% cotton must be used* for the turtle pillow. Use soft, colorful fabric like that used for quilts. No fleece, corduroy fabrics.
- **Fabric Yardage:** one turtle requires 44/45 wide 1-3/4 yard
 - 2 color turtle requires 44/45 wide $\frac{3}{4}$ yd(body piece A/B), $\frac{5}{8}$ yd(shell rim and shell pieces C & D)
 - 3 color turtle requires 44/45 wide $\frac{3}{4}$ yd(body piece A/B), $\frac{5}{8}$ yd(shell rim piece D), fat quarter for Shell(piece C)
- **Notions:** Thread, eyes(2), fabric markers, basic sewing supplies
- **DO NOT** use mono-filament(nylon), metallic thread
- Embroidery Designs--be careful of the placement, children will be using these pillows for sleeping, cuddling, etc.

Notes from the Painted Turtle Organization:

- The turtle pillow pattern belongs to the Paul Newman, Hole in The Wall Gang Camp and may only be used for the purpose of creating pillows for this project.
- Remember: Half of the campers are boys, ages 7 -17
- Use the Label that has been approved.
- **We ask that members not include additional messaging, given that our campers come from diverse backgrounds and religious practices“.**
- Pillows must be made in 100% cotton fabric

Pattern of the Turtle:



Each Chapter President has received a copy of the Turtle Pillow.

You will need to trace the pattern.

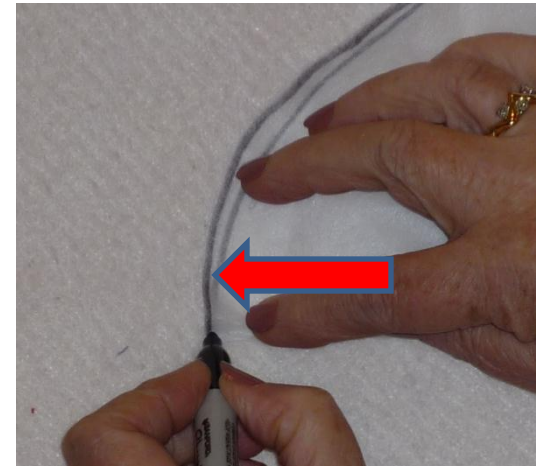
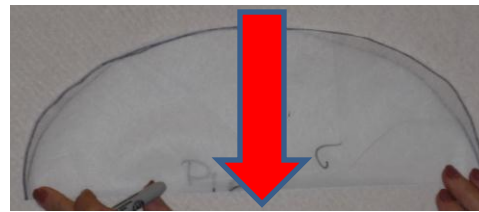
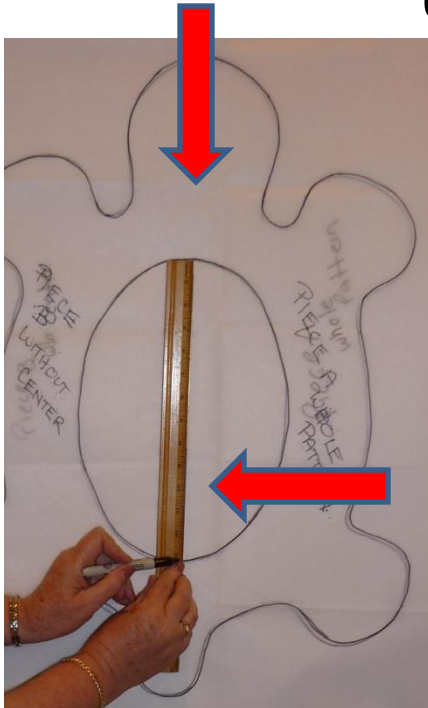
Pattern ease is easier to use for copying since many people will be using it to cut out.

It will last longer than tracing paper.

This pattern can not be used for any other project or be given out.

It holds a copyright by The Painted Turtle.

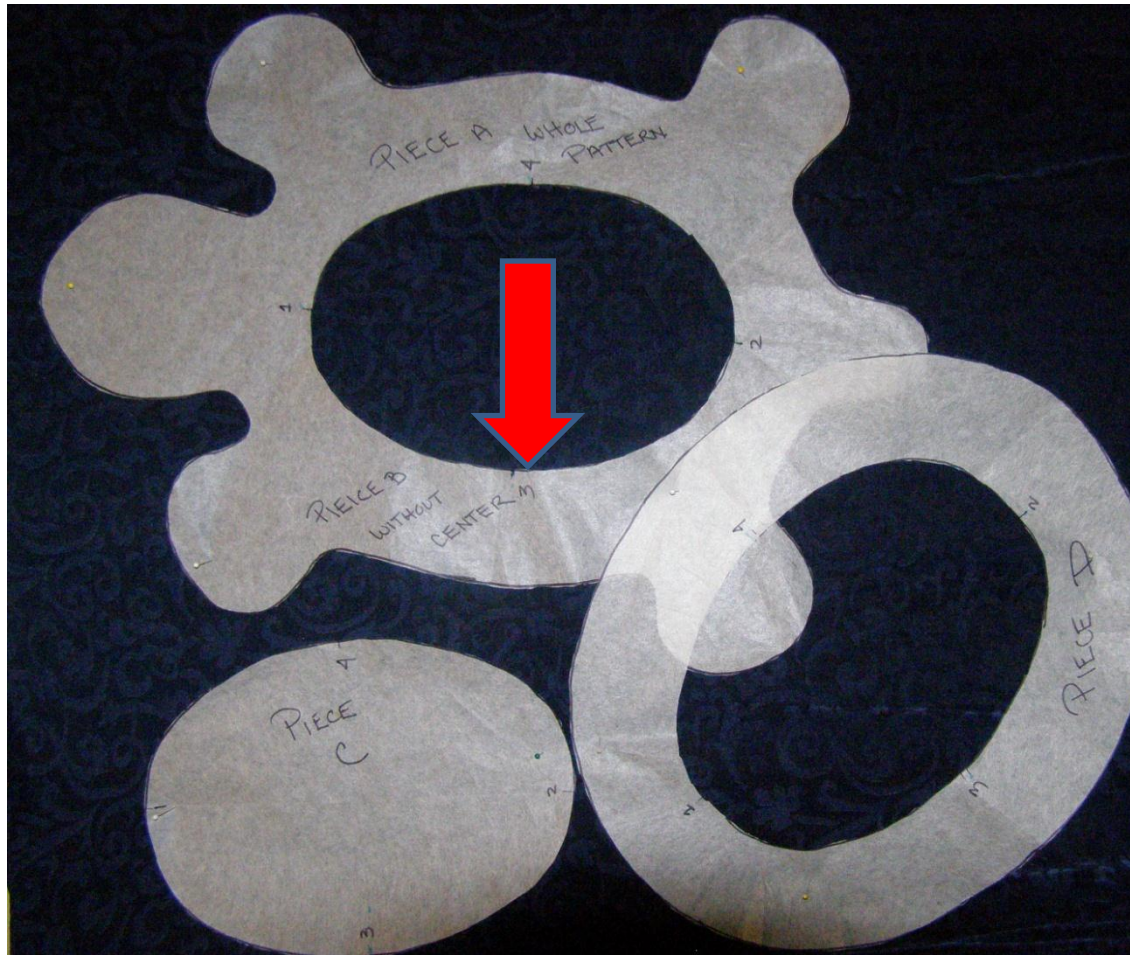
How to Make Registration Marks on the Pattern Pieces:



To make registration marks:

Fold in half in both directions or use ruler, make your marks. Note these pieces are not symmetrical. By doing this it will make it easier to align the seam when ready to sew.

Registration Marks:

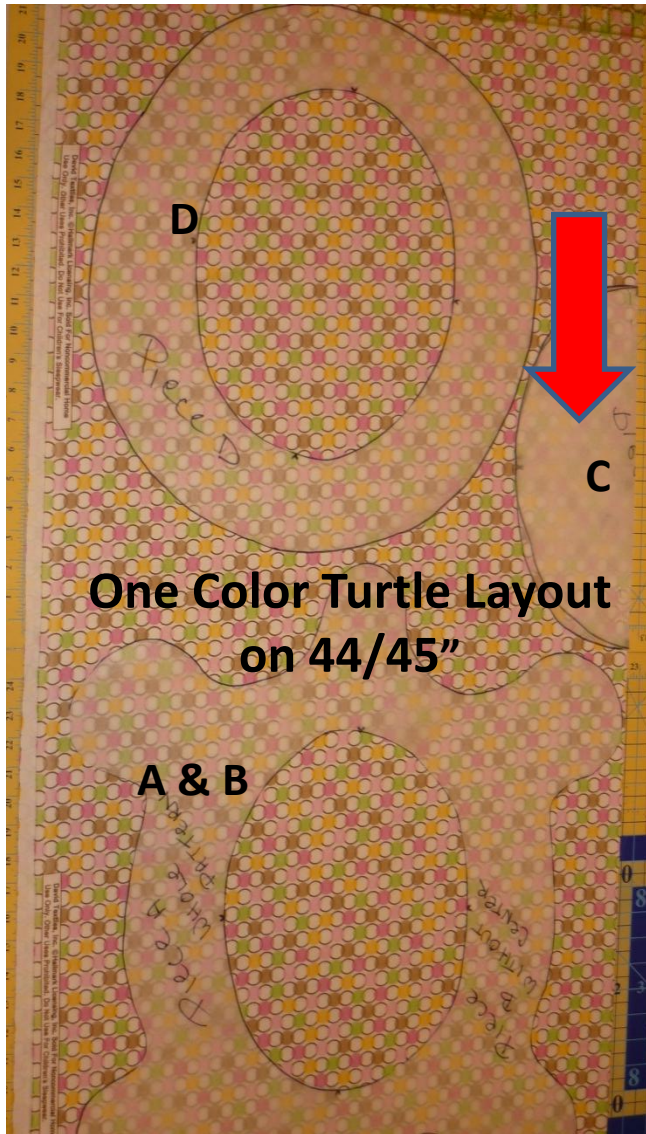
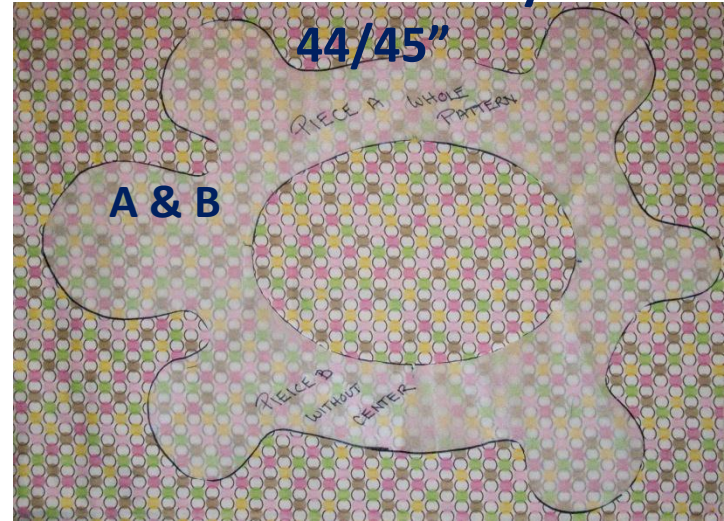


Layout:

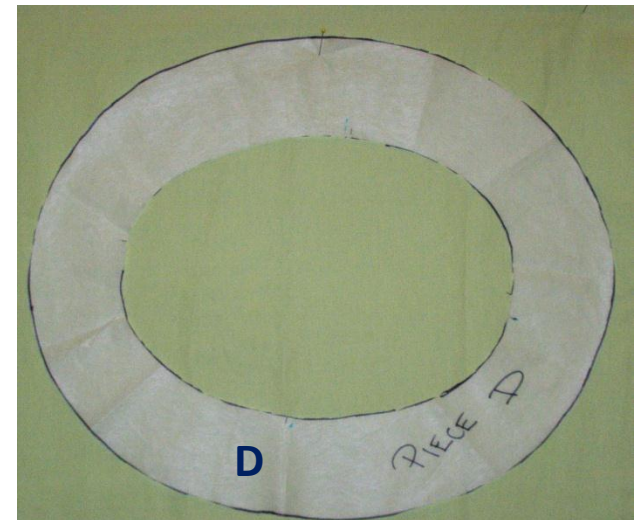
NOTE:
Piece C is
place on
the fold.
It maybe
a slight
bigger
but that's
okay!

Three Color Turtle Layout on

44/45"

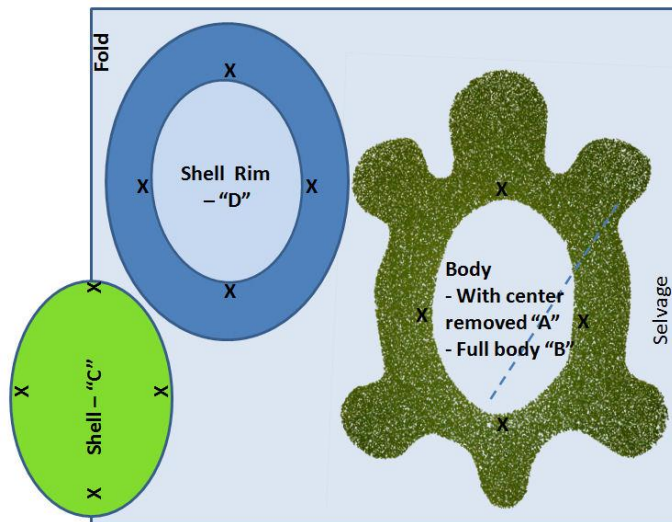
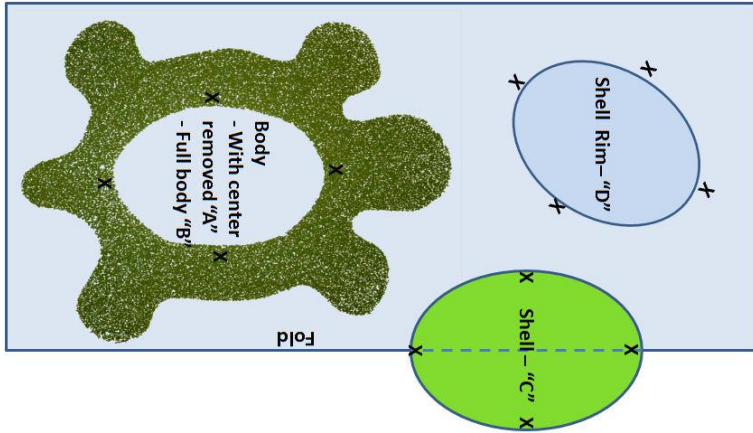


**One Color Turtle Layout
on 44/45"**

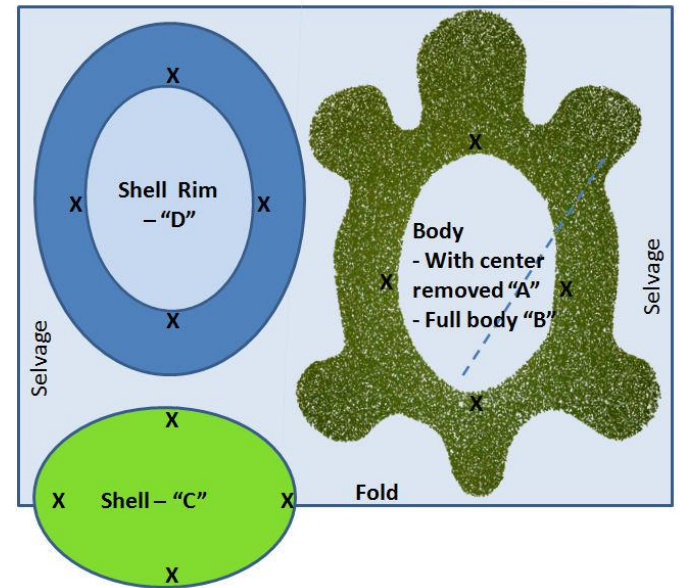


Other Layouts:

44/45" wide

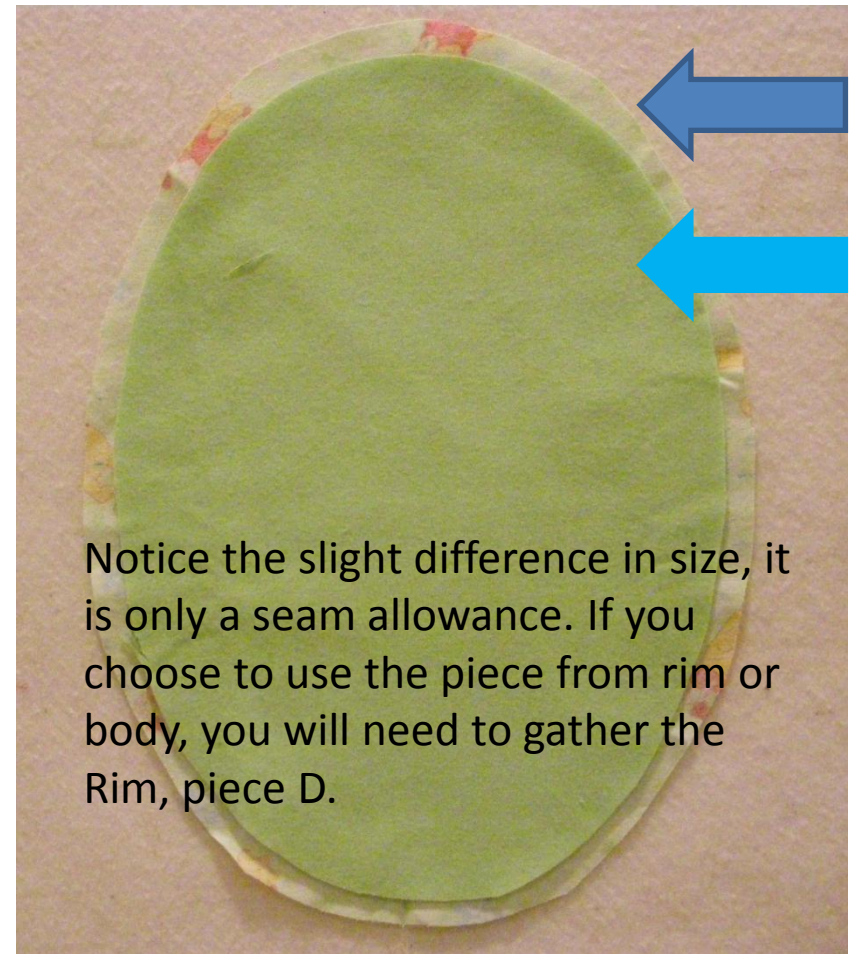
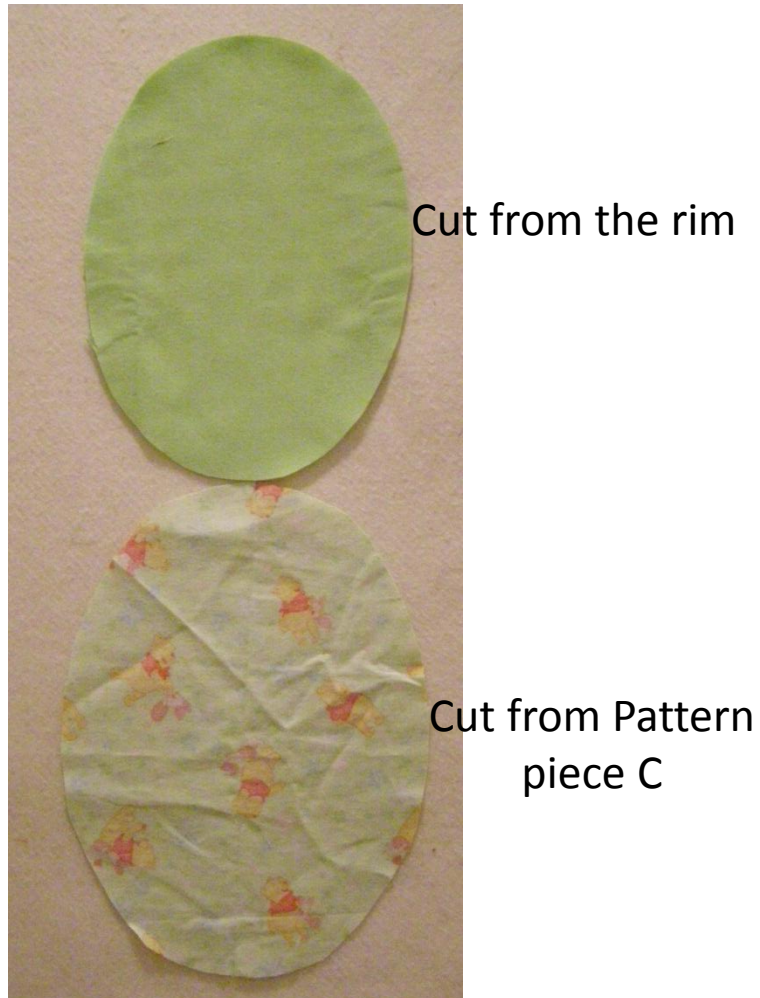


36" wide

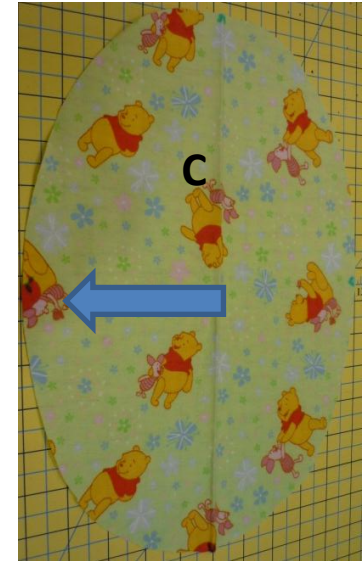
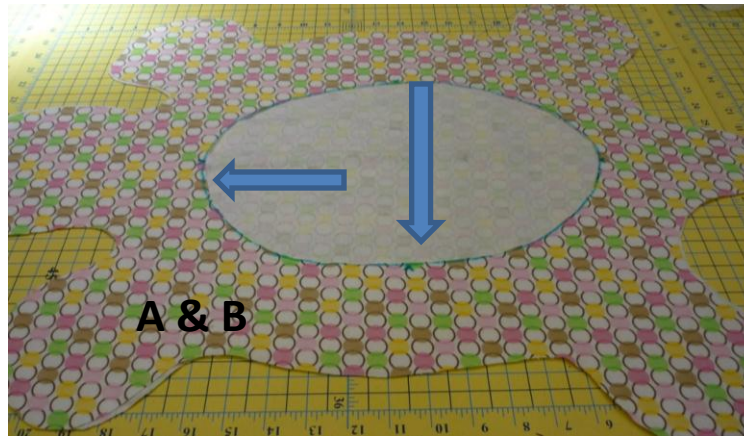
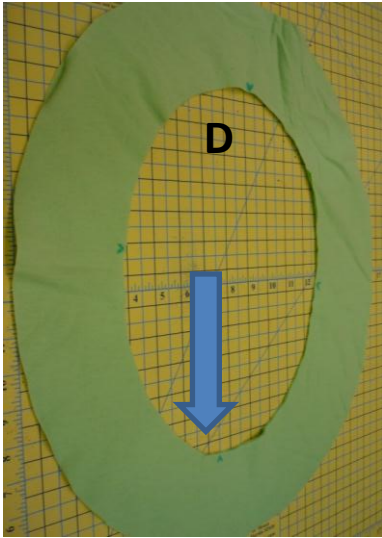


60" wide

Why we use Piece C instead of the inner oval from Pieces B & D:



Cut out the Pattern:



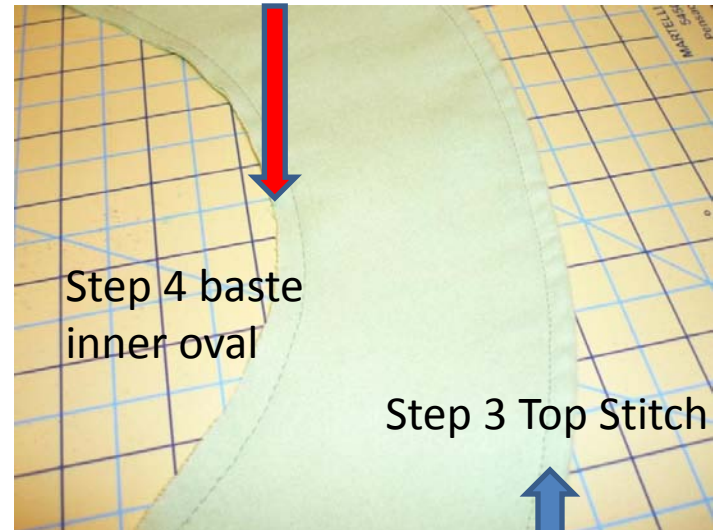
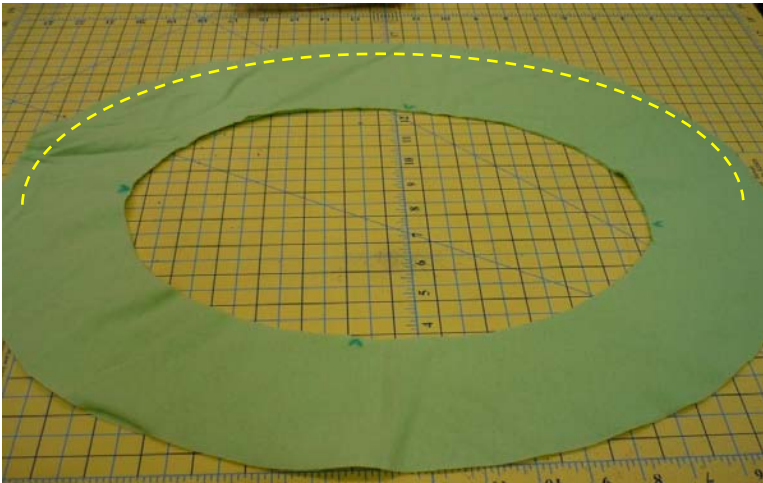
The pieces are cut out and have been marked, ready to sew.

Construction of the Turtle Pillow

- You may use either a 1/4" or 3/8" seam allowance, but MUST be consistent with your choice.

Sewing the Turtle

Steps 1 – 4:



Step 1: Stitch the outer oval; right sides together, matching your marks, sew the outer edge

Step 2: Turn the rim inside out, press

Step 3: Top stitch the outer edge, approximately an $\frac{1}{4}$ inch

Step 4: You may want to baste the inner edge about $\frac{1}{8}$ inch before continuing. This will help keeping the 2 pieces together without puckers when it is time to attach the rim to the body.

Step 4B & 5:



Step 5: Sewing the rim (D) to Body (B). Lay the completed piece D over the front piece B, right sides together and matching your markings. Sew the 3 edges together around the oval opening with a basting stitch (leave the thread ends long because you may need to gather slightly in the next step. This creates an unified piece, which is easier to work with in the next step. You may need to trim. Also you may need to readjust some of the pinning so it will go together easier.

Step 6 Pin B/D to C:



STEP 6: Attach B/D to the shell(C). With right sides of fabric together, match the markings and place pins to hold the shell in position. Then ease the fabric in along each of the quadrants, using as many pins as necessary to keep the pieces together. Pin on the outside of the body like I have done here. I found this easier to do then pinning it inside.



Step 7- Stitch C to B/D:



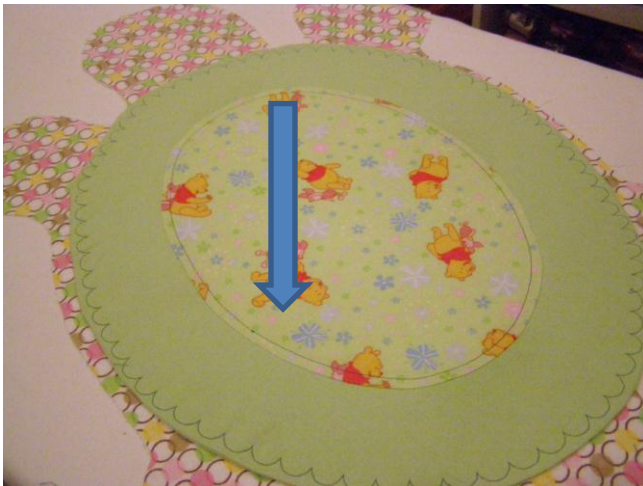
STEP 7: If you sew with the rim/body on top of the shell, you may create puckers, creases on the shell piece. So I found out by sewing with the shell on top of the body/rim was easier. This will help to avoid puckering when sewing the shell to body/rim. While you are sewing it together go slow and you will need to use your left hand to help smooth the wrinkles out while sewing.

When finished, lightly press so the seam allowance is going towards the inside.

Steps 8 & 9:



Step 8: Lightly press so the seam allowance is going towards the inside.



Step 9: This shows a top stitched here but you don't need to. This is up to you. Once again, you can use a decorative stitch.

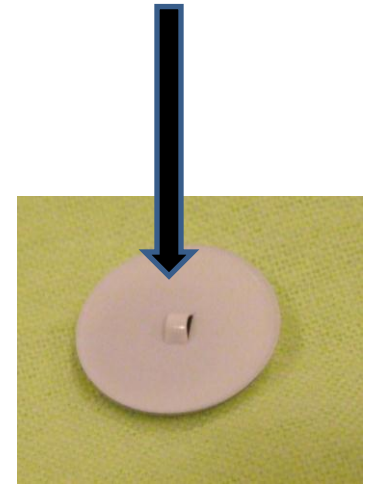
Step 10 –Eyes:



Buttons were used here



These eyes are movable.

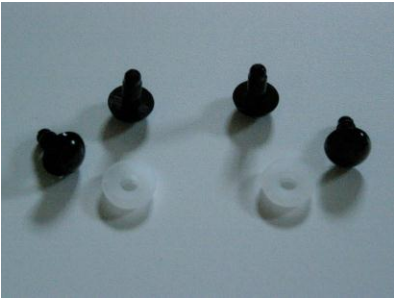


These are sew on,
they have a shank.

Other suggestions for Eyes

- Painted eyes –make sure the paints you use are permanent.
- You can draw eyes on with a sharpie. Just be careful of what color you use.
- Appliqué eyes
- Embroidery

Step 10A-- Safety Eyes:



Safety Eyes



Mark the eye placement



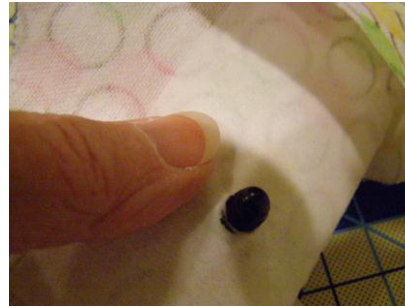
Iron interfacing



Snip Markings



Put eye into hole



Push eye thru hole



Put washer on and push until it is tight

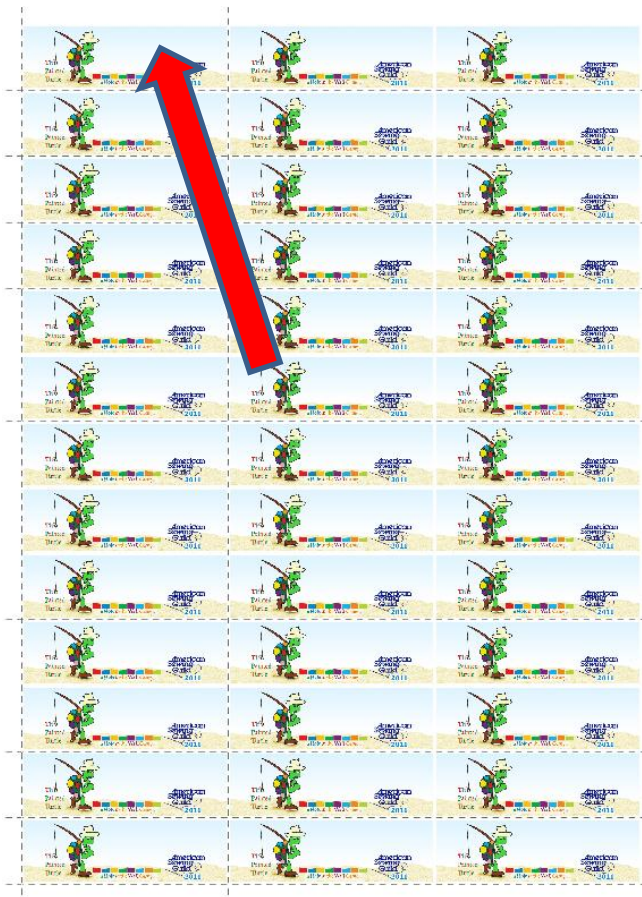


Repeat for second eye

A special label has been created for this project. **If you choose to put a label on the turtle , you must use this label.**

You may write your chapter name or choose to leave it blank so a child can write their own name.

You can find these labels on the www.ASG.org, *Members Only* section. Click on “Special Offers”, look for ScrapSmart. Click on their link and it will take you to the labels. It comes in a PDF or Doc File.



Step 11 – Pin the rim away from the edge:

edge:



Now we are ready to put the turtle together. You will want to pin the rim out of the way. Otherwise you may catch it when sewing the bodies together.



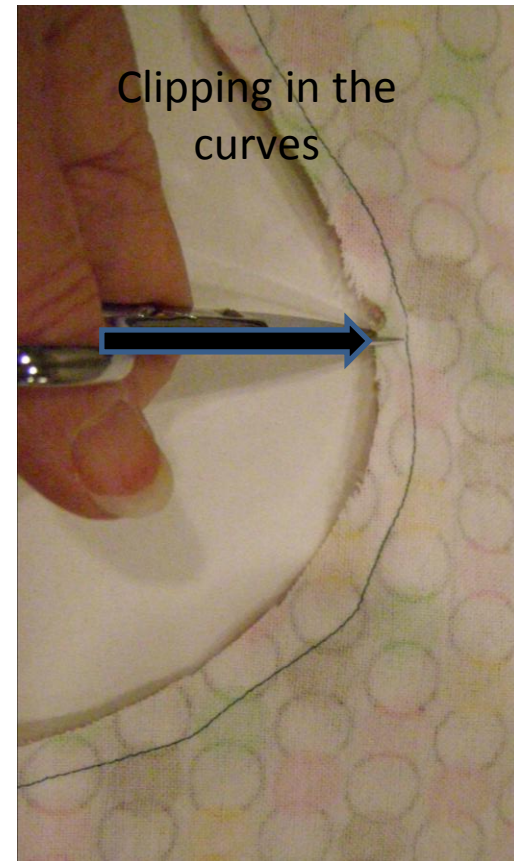
Pin the body/rim/shell to the bottom body(no hole). Mark an opening, now you are ready to sew the turtle together!

Step 12 – Sew the pillow together:



Sew the turtle together. Remember to use the seam allowance you have chosen, 1/4" or 3/8". Leave the opening on the side, so that is easier when you turn it right-side out.

Step 13- Clip the Curves:



Step 14 – Ready to Turn:



All curves have been clipped, now ready for turning it. Can't wait to see what the turtle will look like!



Step 15 – Mark the ‘Toes’:



You may want to lightly press the feet before marking/stitching the toes.

Mark the toes with marking tool.

Stitch the toes but don't make them too big

COMPLETED TURTLE
Remember to leave the
Turtle UNSTUFFED





Completed Turtle Pillows!
(Please note: These pillows have been stuffed to show you what they look like when given to the children)

Additional Notes:

- LEAVE all pillows **UNSTUFFED**
- Mail completed pillows to:
Peggy Campbell, Turtle Project Chair
3738 W. Avenue J-13, Lancaster, CA 93536
rptrpeg@aol.com
- The Turtle Pillow Pattern has been designed for and copyrighted by the Hole in the Wall Gang Camp, and **MAY ONLY** be used for the purpose of creating pillows for this project.

Attention Chapters:

- PLEASE remember to include your chapter name, contact person and a count of donated patterns when sending your turtle pillows to Peggy Campbell.